

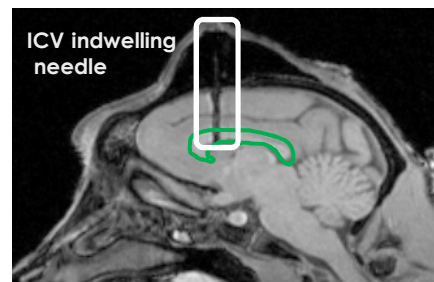
Central Nervous System



Experience breeds quality

Delivery of new modalities of drugs is a rapidly growing field and SNBL has the specialized techniques, equipment, and dedicated resources to provide a range of GLP-compliant studies customized to your needs.

SNBL offers central nervous system administration and cerebrospinal fluid sampling.



Capabilities

Intrathecal (IT) Administration
Puncture: Rats · NHPs · Dogs Catheter: NHPs · Dogs
Intracerebroventricular (ICV) Administration
Rats · NHPs
CSF Sampling
Rats · NHPs · Dogs
Specialized Equipment
MRI · X-Ray Fluoroscopy · Angiography

- **IT Administration**
 - Bolus and 24hr infusion offered
 - About 30 IT studies performed over last 5 years
- **ICV Administration**
 - Possible to create individual brain maps using MRI
 - High accuracy in target region, within 0.3mm
 - About 15 ICV studies performed over last 5 years
- **Cerebrospinal Fluid (CSF) Sampling**
 - Sampling up to 8 weeks in NHPs
 - Sequentially sample from conscious NHPs through a catheter from lumbar region placed intracisternally using X-ray fluoroscopy
-



On-Site Resources

Clinical Veterinarians
Board-Certified Pathologists
Board-Certified Veterinary Ophthalmologist
Board-Certified Toxicologists



Accreditation

GLP-Certified Facility
AAALAC International



Supporting Services

Analytical Chemistry
Biomarkers
TK/PK
Clinical Pathology
Flow Cytometry
Histology