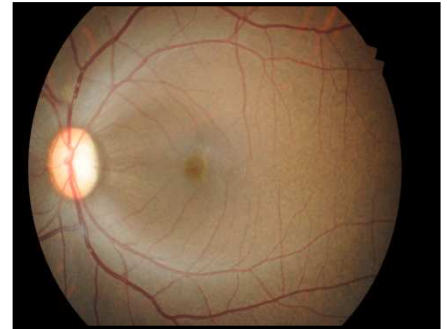


# Ocular Toxicity

Ocular Toxicity is a burgeoning field and SNBL Japan has the techniques and equipment specialized resources to provide a range of GLP-compliant ocular toxicity studies customized to your needs.



## Ocular Administration

<b>Subretinal Injection</b>
Rodents · NHPs
<b>Intravitreal Injection</b>
Rodents · Rabbits · NHPs · Dogs
<b>Ocular Installation</b>
Mice · Rats · Rabbits · NHPs
<b>Intracameral Injection</b>
Rodents · Rabbits · NHPs
<b>Subtenon Injection</b>
NHPs



### Administration

- Careful administration preserves animal sight and decreases artifacts in histology
- Large variety of administration methods to mimic the clinical route

### Expert Resources

- Examinations by a Japanese board-certified or US board-certified veterinary ophthalmologist
- Experienced ocular tox pathologist

### Equipment and Techniques

- We can check visual function using Focal electroretinography (FERG)
- Spectral domain optical coherence tomography allows detailed examinations

### Superb Specimen Preparation

- Soft tissues such as the eyeballs are difficult to prepare as specimens with the shape intact but our techniques allow us to prepare excellent specimens



### On-Site Resources

Clinical Veterinarians  
Board-Certified Pathologists  
Board-Certified Veterinary Ophthalmologist  
Board-Certified Toxicologists



### Accreditation

GLP-Certified Facility  
AAALAC International



### Supporting Services

Analytical Chemistry  
Biomarkers  
TK/PK  
Clinical Pathology  
Flow Cytometry  
Histology